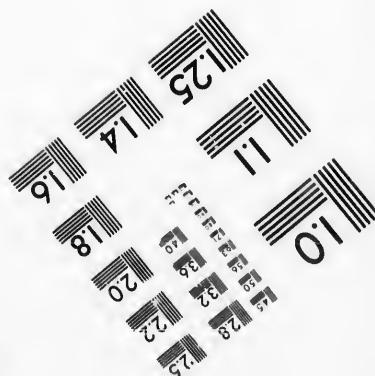
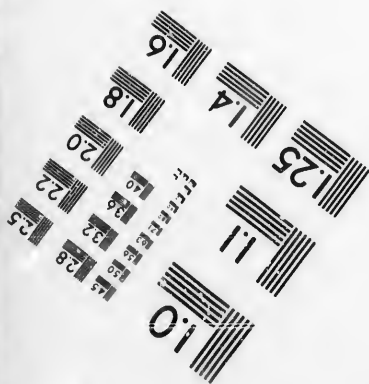
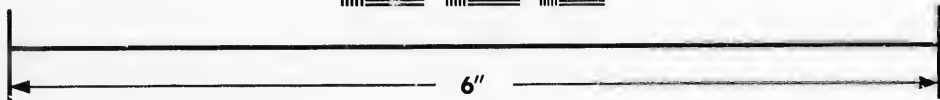
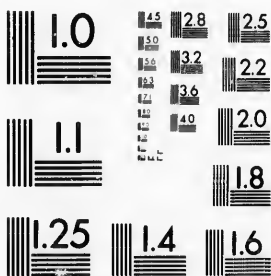


**IMAGE EVALUATION
TEST TARGET (MT-3)**



**Photographic
Sciences
Corporation**

23 WEST MAIN STREET
WEBSTER, N.Y. 14590
(716) 872-4503

1.5
1.8
2.0
2.2
2.5
2.8
3.2
3.6
4.0

**CIHM/ICMH
Microfiche
Series.**

**CIHM/ICMH
Collection de
microfiches.**



Canadian Institute for Historical Microreproductions / Institut canadien de microreproductions historiques

1.0
1.2
1.5
1.8
2.0
2.2
2.5
2.8
3.2
3.6
4.0

© 1987

Technical and Bibliographic Notes/Notes techniques et bibliographiques

The Institute has attempted to obtain the best original copy available for filming. Features of this copy which may be bibliographically unique, which may alter any of the images in the reproduction, or which may significantly change the usual method of filming, are checked below.

- Coloured covers/
Couverture de couleur
- Covers damaged/
Couverture endommagée
- Covers restored and/or laminated/
Couverture restaurée et/ou pelliculée
- Cover title missing/
Le titre de couverture manque
- Coloured maps/
Cartes géographiques en couleur
- Coloured ink (i.e. other than blue or black)/
Encre de couleur (i.e. autre que bleue ou noire)
- Coloured plates and/or illustrations/
Planches et/ou illustrations en couleur
- Bound with other material/
Relié avec d'autres documents
- Tight binding may cause shadows or distortion
along interior margin/
La reliure serrée peut causer de l'ombre ou de la
distorsion le long de la marge intérieure
- Blank leaves added during restoration may
appear within the text. Whenever possible, these
have been omitted from filming/
Il se peut que certaines pages blanches ajoutées
lors d'une restauration apparaissent dans le texte,
mais, lorsque cela était possible, ces pages n'ont
pas été filmées.
- Additional comments:/
Commentaires supplémentaires:

L'Institut a microfilmé le meilleur exemplaire qu'il lui a été possible de se procurer. Les détails de cet exemplaire qui sont peut-être uniques du point de vue bibliographique, qui peuvent modifier une image reproduite, ou qui peuvent exiger une modification dans la méthode normale de filmage sont indiqués ci-dessous.

- Coloured pages/
Pages de couleur
- Pages damaged/
Pages endommagées
- Pages restored and/or laminated/
Pages restaurées et/ou pelliculées
- Pages discoloured, stained or foxed/
Pages décolorées, tachetées ou piquées
- Pages detached/
Pages détachées
- Showthrough/
Transparence
- Quality of print varies/
Qualité inégale de l'impression
- Includes supplementary material/
Comprend du matériel supplémentaire
- Only edition available/
Seule édition disponible
- Pages wholly or partially obscured by errata
slips, tissues, etc., have been refilmed to
ensure the best possible image/
Les pages totalement ou partiellement
obscurcies par un feuillet d'errata, une pelure,
etc., ont été filmées à nouveau de façon à
obtenir la meilleure image possible.

This item is filmed at the reduction ratio checked below/
Ce document est filmé au taux de réduction indiqué ci-dessous.

| | | | | | | | | | | | |
|--------------------------|--------------------------|--------------------------|--------------------------|--------------------------|--------------------------|--------------------------|--------------------------|--------------------------|-------------------------------------|--------------------------|--------------------------|
| 10X | 12X | 14X | 16X | 18X | 20X | 22X | 24X | 26X | 28X | 30X | 32X |
| <input type="checkbox"/> | <input type="checkbox"/> | <input type="checkbox"/> | <input type="checkbox"/> | <input type="checkbox"/> | <input type="checkbox"/> | <input type="checkbox"/> | <input type="checkbox"/> | <input type="checkbox"/> | <input checked="" type="checkbox"/> | <input type="checkbox"/> | <input type="checkbox"/> |

The copy filmed here has been reproduced thanks to the generosity of:

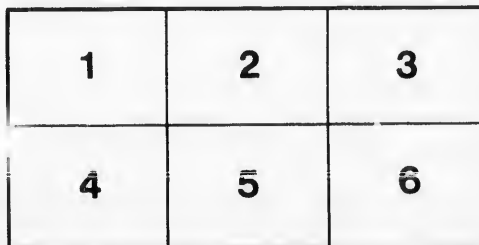
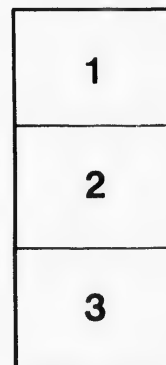
Metropolitan Toronto Library
Canadian History Department

The images appearing here are the best quality possible considering the condition and legibility of the original copy and in keeping with the filming contract specifications.

Original copies in printed paper covers are filmed beginning with the front cover and ending on the last page with a printed or illustrated impression, or the back cover when appropriate. All other original copies are filmed beginning on the first page with a printed or illustrated impression, and ending on the last page with a printed or illustrated impression.

The last recorded frame on each microfiche shall contain the symbol \rightarrow (meaning "CONTINUED"), or the symbol ∇ (meaning "END"), whichever applies.

Maps, plates, charts, etc., may be filmed at different reduction ratios. Those too large to be entirely included in one exposure are filmed beginning in the upper left hand corner, left to right and top to bottom, as many frames as required. The following diagrams illustrate the method:



L'exemplaire filmé fut reproduit grâce à la générosité de:

Metropolitan Toronto Library
Canadian History Department

Les images suivantes ont été reproduites avec le plus grand soin, compte tenu de la condition et de la netteté de l'exemplaire filmé, et en conformité avec les conditions du contrat de filmage.

Les exemplaires originaux dont la couverture en papier est imprimée sont filmés en commençant par le premier plat et en terminant soit par la dernière page qui comporte une empreinte d'impression ou d'illustration, soit par le second plat, selon le cas. Tous les autres exemplaires originaux sont filmés en commençant par la première page qui comporte une empreinte d'impression ou d'illustration et en terminant par la dernière page qui comporte une telle empreinte.

Un des symboles suivants apparaîtra sur la dernière image de chaque microfiche, selon le cas: le symbole \rightarrow signifie "A SUIVRE", le symbole ∇ signifie "FIN".

Les cartes, planches, tableaux, etc., peuvent être filmés à des taux de réduction différents. Lorsque le document est trop grand pour être reproduit en un seul cliché, il est filmé à partir de l'angle supérieur gauche, de gauche à droite, et de haut en bas, en prenant le nombre d'images nécessaire. Les diagrammes suivants illustrent la méthode.

ails
du
odifier
une
mage

rata
o
elure.
à

RE

COPY of a L.L.
COLONIES, d
RESERVES in

Colonial Office
29 M

(Copy.)

My Lord,
I HAVE the hon
Reserves in Upper
and Surveyor-gen

In explanation
Bill passed the U
Mr. Sullivan to g
home.

The Lord Jol
&c. &c.

(Copy.)

Total Number of A
ditto, as returned
Number of Acres in
in the Huron Tra

Number of Acres so

Average price of the

Number of Acres
England
Number of Acres of
Orders in Council

Number of Acres re
Deduct Number of

at the probable val
whole Clergy Rese
safety.

Captain Pringle,
&c. &c. &c.

CANADA (CLERGY RESERVES).

RETURN to an ADDRESS of the Honourable The House of Commons,
dated 28 May 1840;—for,

COPY of a LETTER from Captain PRINGLE to the SECRETARY of STATE for the COLONIES, dated 9th May 1840, relative to the Extent and Value of the CLERGY RESERVES in *Upper Canada*.

Colonial Office, Downing-street,
29 May 1840. }

R. VERNON SMITH

(Copy.)

My Lord,

London, 9 May 1840.

I HAVE the honour to enclose a Memorandum relative to the probable value of the Clergy Reserves in Upper Canada, given to me by Mr. Sullivan, the Commissioner of Crown Lands and Surveyor-general for that Province.

In explanation of its being a rough estimate, I beg to state, that the Clergy Reserves Bill passed the Upper House a couple of days before I left Toronto, and I then requested Mr. Sullivan to give me a Memorandum of their extent and value, that I might take it home.

I have, &c.
(signed) *J. Wm Pringle.*

The Lord John Russell,
&c. &c. &c.

(Copy.)

Crown Land Office, Toronto,
23 January 1840.

| | |
|---|-----------|
| Total Number of Acres of Clergy Reserves in surveyed Townships, and Blocks of | Acres. |
| ditto, as returned by the Surveyor-general's Department | 2,197,526 |
| Number of Acres in the Block set apart in lieu of the Clergy Reserves not appropriated in the Huron Tract | 157,143 |
| | <hr/> |
| Number of Acres sold up to 31st December 1839 inclusive | 2,354,669 |
| | 500,433 |
| | <hr/> |
| Remaining unsold | 1,854,236 |

Average price of the Clergy Reserves sold up to 31st December 1839 - - - £. 0. 13. 6 $\frac{1}{2}$ per acre.

Memorandum:

| | |
|---|--------|
| Number of Acres of Clergy Reserves under Patent as Endowments to Church of England | Acres. |
| Number of Acres of Clergy Reserves granted to Clergy of other Denominations under Orders in Council | 22,951 |
| | 2,995 |
| | <hr/> |
| | 25,946 |

| | |
|----------------------------------|------------------|
| Number of Acres remaining unsold | 1,854,236 |
| Deduct Number of Acres granted | 25,946 |
| | <hr/> |
| Remaining disposable | 1,828,290 acres, |

at the probable value of 10s. currency per acre, would amount to £.914,145 currency. I think the whole Clergy Reserves, sold and unsold, may be reckoned worth £.1,000,000 sterling with great safety.

(signed) *R. B. Sullivan.*

Captain Pringle,
&c. &c. &c.

on the ...
45 Vic ...
3000
of G
11

CANADA (CLERGY RESERVES).

COPY of a LETTER from Captain PRINGLE to
the SECRETARY of STATE for the COLONIES,
dated 9th May 1840, relative to the EXTENT and
VALUE of the CLERGY RESERVES in *Upper*
Canada.

(*Mr. Vernon Smith.*)

Ordered, by The House of Commons, to be Printed,
1 June 1840.

on the ...
... via ...
...
...

...

